

Join the dots

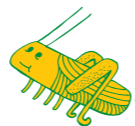


Join the dots to identify this giant insect



FACT!

Spiders and Harvestmen look the same... except Harvestmen don't have a head!



Answers

Which is the biggest bug?

1. Ant: 5mm
2. Ladybird: 7mm
3. Woodlouse: 18mm
4. Caterpillar: 25mm
5. Centipede: 30mm
6. Snail: 80mm
7. Slug: 110mm
8. Worm: 120mm

Find the hidden words



Spot the bug!



Activity sheet

What's under your feet?

Name: _____

School / Class: _____

Which is the biggest bug?

Can you match the bugs with their correct sizes? * Circle the biggest and smallest bugs.



Slug



Ant



Caterpillar



Worm



Snail



Ladybird



Woodlouse



Centipede

5mm

7mm

18mm

25mm

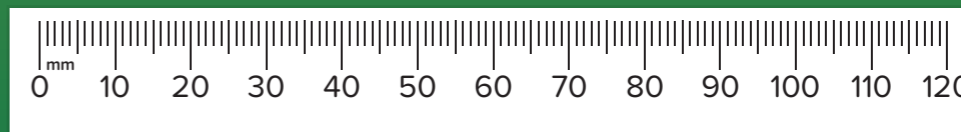
30mm

80mm

110mm

120mm

Look out for the hidden bugs to colour in



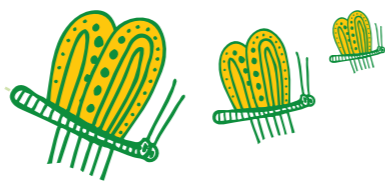
*NB: These are average sizes



BTO
Looking out for birds

BTO is a registered charity with the numbers 216652 (England & Wales) SC039193 (Scotland)

Spot the bug!



Can you find the eight bugs hidden in the picture?



Find the hidden words



O	R	Z	C	F	N	K	H	Y	U	H	U
B	O	V	A	A	B	A	X	X	I	R	Y
L	B	J	T	N	E	S	T	B	O	X	F
A	I	M	E	L	E	S	F	W	O	R	M
C	N	E	R	P	T	N	S	U	H	G	X
K	S	A	P	C	L	V	P	R	Z	R	D
B	N	R	I	Q	E	R	I	G	I	A	A
I	A	W	L	J	F	W	D	V	B	S	W
R	I	I	L	P	I	G	E	O	N	S	S
D	L	G	A	T	A	L	R	G	J	W	O
X	I	I	R	D	G	V	T	H	F	N	I
C	F	K	H	X	U	L	S	D	D	L	L

Nestbox
Pigeon
Worm
Grass

Soil
Robin
Beetle
Blackbird

Snail
Caterpillar
Spider
Earwig

FACT!

There are around 3,000 different beetle species in the UK.

Tick off each bug when you find it:

- 
Snail
- 
Ant
- 
Butterfly
- 
Spider
- 
Ladybird
- 
Earwig
- 
Fly
- 
Greenfly






Want to join in a huge science experiment?
 Ask your teacher to sign up to our What's Under Your Feet? campaign at www.jointhepod.org/wuyf